

Government of India
Ministry of Railways
Research, Designs & Standards Organisation
Manak Nagar, Lucknow - 226 011

No.EL/3.2.1/2/J6

22.4.1985

MODIFICATION SHEET NO. RDSO/WAM4/142
MODIFICATION TO NECK PORTION OF TRANSFORMER

1. OBJECT

It has been reported by various Railways that the cooling of oil inside the neck portion of the area connecting the tap changer and main transformer is poor as with circulation of oil is not proper and that there are cases of deterioration of oil in this region and flash-over between leads, Since the circulation in this area can not be improved, it is possible to drain off the oil in this portion through the drain plug below and clean the tap leads periodically with a hot jet of oil from the top. To enable this, a circular opening as indicated in the enclosed drawing (SK. EL. 3821) is to be made which can be normally kept covered with a gasket and dummy plate:

2. WORK TO BE CARRIED OUT

Make a circular opening on top of the neck portion of the transformer right above the drain plug s shown in the enclosed drawing (SK. EL.3821).

Fabricate a dummy plate with fixing arrangement and gasket as shown in the above drawing.

3. APPLICATION

All ac electric locomotives.

4. MATERIAL REQUIRED

Sheet Steel Cover bolt and Nuts Gasket.

5. MATERIAL SURPLUS

Nil.

6. PERIODICITY

Minutes fo the meeting held on 4.8.84 at Electric Loco Shed, Kanpur with M/s BHEL on failures and problems of BHEL,transformers in electric locomotives.

7. AGENCY OF IMPLEMENTATION

All electric loco sheds and POH Workshop.

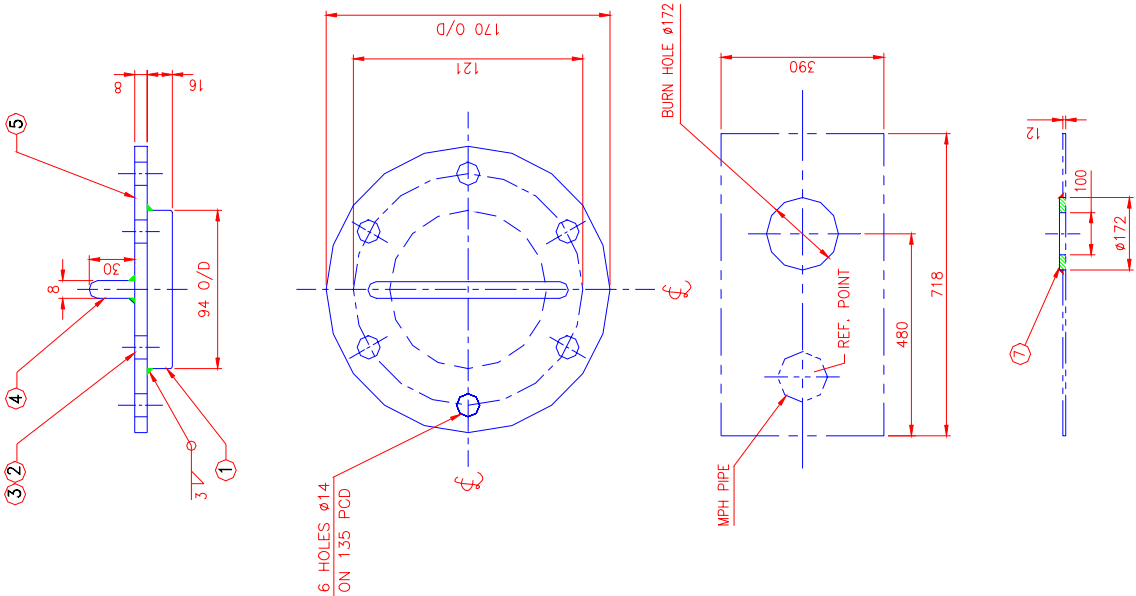
8. DISTRIBUTION

As per list attached.

RP/aur

Encl. : SK. EL. 3821
mailing list .

(M. M. PRAKASAM)
For Director General
(Elect)



NOTE :- INSPECTION COVER TO BE SHOT BLASTED AND PAINTED.

7	FLANGE BLACK STEEL PLATE 12 THICK x100 I/D x 170 O/D	IS : 226 - 1975
6	GASKET NEOPRENE BONDED CORK SHEET 5 THICK x100 I/D x170 O/D	IS : 4253 Pt II -1968
5	INSPECTION COVER BLACK STEEL PLATE 8 THICK x170 O/D	IS : 226 - 1975
4	HANDLE BLACK STEEL ROD	IS : 226 - 1975
3	SPRING WASHER 12 mm.	
2	HEX. HEAD SCREW STEEL M12x20 LONG	
1	DISPLACEMENT PAD BLACK STEEL PLATE 8 THICK x 170 O/D	IS : 226 - 1975
PART NO.	DESCRIPTION	QTY.
REF. DRG	SCALE	APPROVED BY
BHEL No.2466560000	1:2.5:1:10	MATL & SPEC.

INSPECTION COVER
FOR TAP CHANGER SUPPORT

R.D.S.O. ELEC. DTE

SKEL- 3821

